



Energy & Data Transmission Systems for Waste Water Treatment





Solutions for Waste Water Treatment

Reliable Energy Transmission

We move your business!

Anywhere goods and people are in motion, you will find custom-engineered solutions by Conductix-Wampfler for the flexible transmission of power, data, and media.

Today more than ever, the performance demands of waste water treatment plants rely on proven, reliable technology.



Slip ring assembly on a Circular Scraper Bridge

Continuously operating machines, for example, linear and circular scraper bridges or mobile sludge drying machines require a reliable transmission of energy, control and data signals. Due to the aggressive atmosphere and the continuous movement they require tough products offering both high quality and long service life.

It's here that the innovative system solutions of Conductix-Wampfler have the greatest impact. With over 30 years experience in environmental applications and numerous realised solutions and references around the world, we are your experienced and reliable partner.

Special versions of our high quality products resist the harsh conditions in such aggressive atmospheres ensuring good longevity and low maintenance costs.



Motorised Cable Reel on a Linear Scraper Bridge

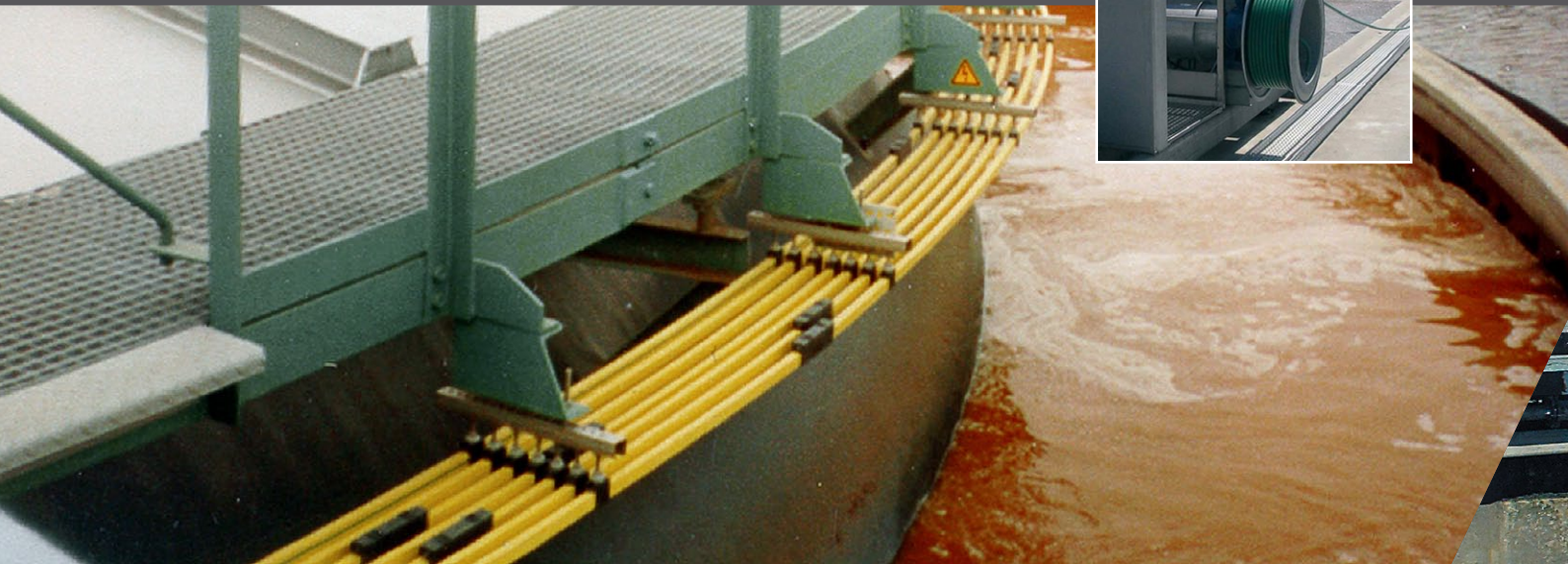
We deliver motor cable reels, spring cable reels, conductor rails and festoon systems for longitudinal clarifiers. ATEX-certified festoon systems from our C-rail program are available for explosion proof areas.

In circular clarifiers our slip ring assemblies and conductor rails are in use. Whereas festoon systems combined with spring cable reels and conductor rails are applied in solar sludge drying systems.

Customized solution with conductor rail, spring reel and slip ring assembly for sludge drying systems



Solutions for Circular and Rectangular Scraper Bridges and Filter Beds



Slip Ring Assemblies

Application

- Main energy supply for circular scraper bridges in various basin types, enclosed or on top of the bridge

Solution

- Wide range of slip ring assemblies from 16 up to 400 A
- Slip ring bodies with tube passage and housing of stainless steel
- Available options: heating + vent plug

Advantages

- Ability to provide a customized solution (engineering and project support)



Conductor Rails

Application

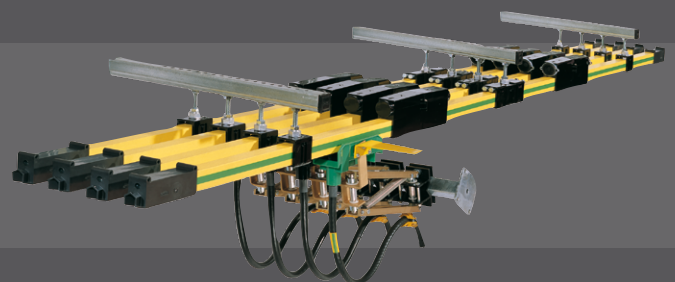
- Main energy supply for bridges & filter beds in a compact format

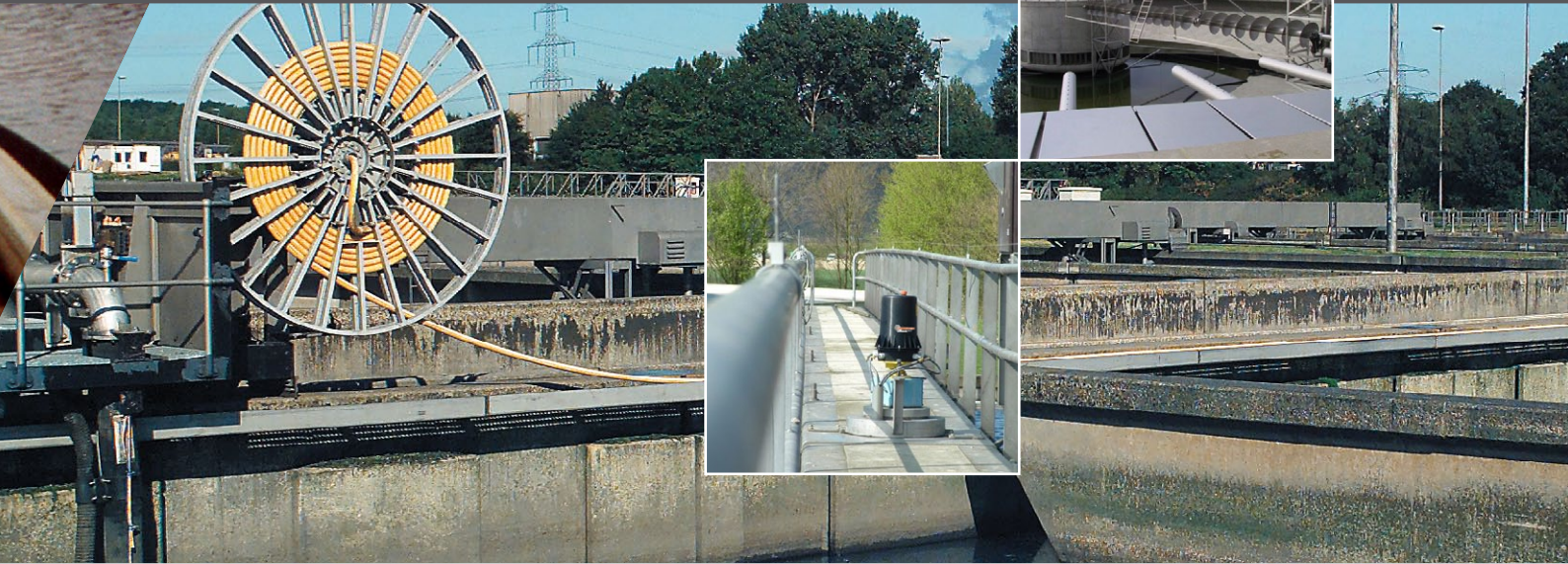
Solution

- Conductor rail program
- Options of standard copper and stainless steel conductors
- Additional protective features available

Advantages

- Simple support arrangement
- Compact design
- Minimal added towing force
- Simple maintenance, inspection & repair





Cable Reels

Application

- Main energy supply for rectangular scraper bridges

Solution

- Wide Range of random and mono-spiral winding spring operated and motor operated reels with magnetic coupling for all requirements
- Numerous types and diameters of cables
- Special corrosion protection covering

Advantages

- Most economical solution
- Fast and easy installation
- High flexibility through adjustable coupling

Festoon Systems

Application

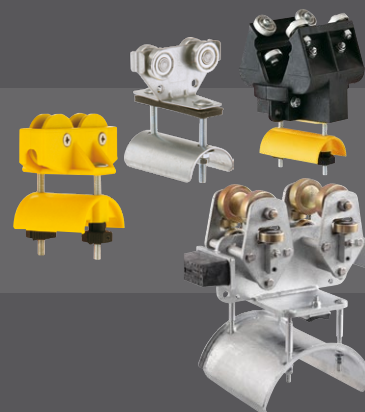
- Main energy supply for bridges in explosion-risk areas or with limited installation space

Solution

- Festoon systems for wire ropes, C-rail tracks, square rail tracks and I-beam tracks
- Acid resistant / Stainless Steel versions
- Explosion-proof versions

Advantages

- Cost-effective solution
- Easy maintenance
- Trolleys available for curved square rail tracks



Custom Services!

Industry-specific experience and expertise

We speak our customers language. Our specialists consult with customers locally to develop custom configured solutions.

Our leading edge innovations enable us to help our customers increase productivity and optimise production.



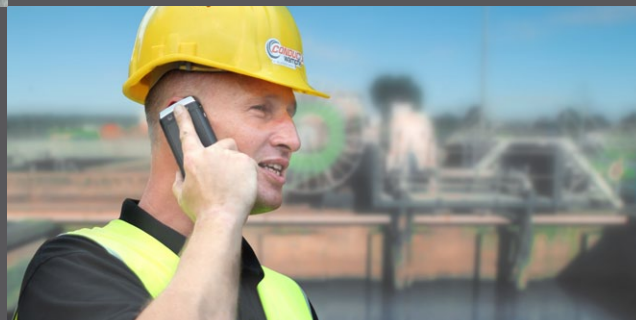
A single source supplier

Conductix-Wampfler designs, develops and produces a complete range of products to supply non stationary consumers with power and data signals. As a result, our customers receive product neutral consulting and can count on us for the optimum solution for any industrial application. Conductix-Wampfler offers not only products but also total custom solutions:

- Product neutral consulting
- Engineering
- Customer specific solutions
- Pre-assembled systems
- Quality controls according to customer standards
- On site installation
- Maintenance and service



Conductix-Wampfler's specialists provide complete support from the initial programming and design to the final assembly on site – worldwide!



Global presence

Like our customers and the projects we handle, we are present worldwide. With production locations in Europe, North & South America and Asia Pacific Conductix-Wampfler can guarantee available capacity and fast delivery worldwide.

Perfect coordination

Network thinking and action are just as important to Conductix-Wampfler as the relationship with our customers. This provides the basis for the future and lets us forge ahead together by providing solutions for a moving world.

Your Applications – Our Solutions

Energy and Data Transmission Systems for waste water treatment represent only some of the many solutions made possible by the broad spectrum of Conductix-Wampfler products. The solutions we deliver for your applications are based upon your specific requirements. In many cases, a combination of several different Conductix-Wampfler systems can prove advantageous. You can count on all of Conductix-Wampfler's Business Units for hands-on engineering support – coupled with the perfect solution to meet your energy management and control needs.



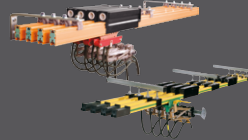
Cable reels

Motorised reels and spring reels by Conductix-Wampfler hold their own wherever energy, data and media have to cover the most diverse distances within a short amount of time – in all directions, fast and safe.



Festoon systems

It is hard to imagine Conductix-Wampfler cable trolleys not being used in virtually every industrial application. They are reliable and robust and available in an enormous variety of dimensions and designs.



Conductor rails

Whether they're enclosed conductor rails or expandable single-pole systems, the proven conductor rails by Conductix-Wampfler reliably move people and material.



Non-insulated conductor rails

Extremely robust, non-insulated conductor rails with copper heads or stainless steel surfaces provide the ideal basis for rough applications, such as in steel mills or shipyards.



Energy guiding chains

The "Jack of all trades" when it comes to transferring energy, data, air and fluid hoses. With their wide range, these energy guiding chains are the ideal solution for many industrial applications.



Slip ring assemblies

Whenever things are really "moving in circles", the proven slip ring assemblies by Conductix-Wampfler ensure the flawless transfer of energy and data. Here, everything revolves around flexibility and reliability!



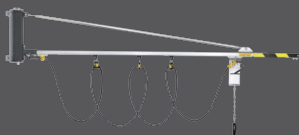
Inductive Power Transfer IPT®

The no-contact system for transferring energy and data. For all tasks that depend on high speeds and absolute resistance to wear.



Reels, retractors and balancers

Whether for hoses or cables, as traditional reels or high-precision positioning aids for tools, our range of reels and spring balancers take the load off your shoulders.



Jib boom

Complete with tool transporters, reels, or an entire media supply system – here, safety and flexibility are key to the completion of difficult tasks.



Conveyor systems

Whether manual, "semi-automatic" or with Power & Free – flexibility is achieved with full customisation regarding layout and location.

www.conductix.com

Conductix-Wampfler has just one critical mission: To provide you with energy and data transmission systems that will keep your operations up and running 24/7/365.

info.uk@conductix.com

www.conductix.com



DELACHAUX GROUP